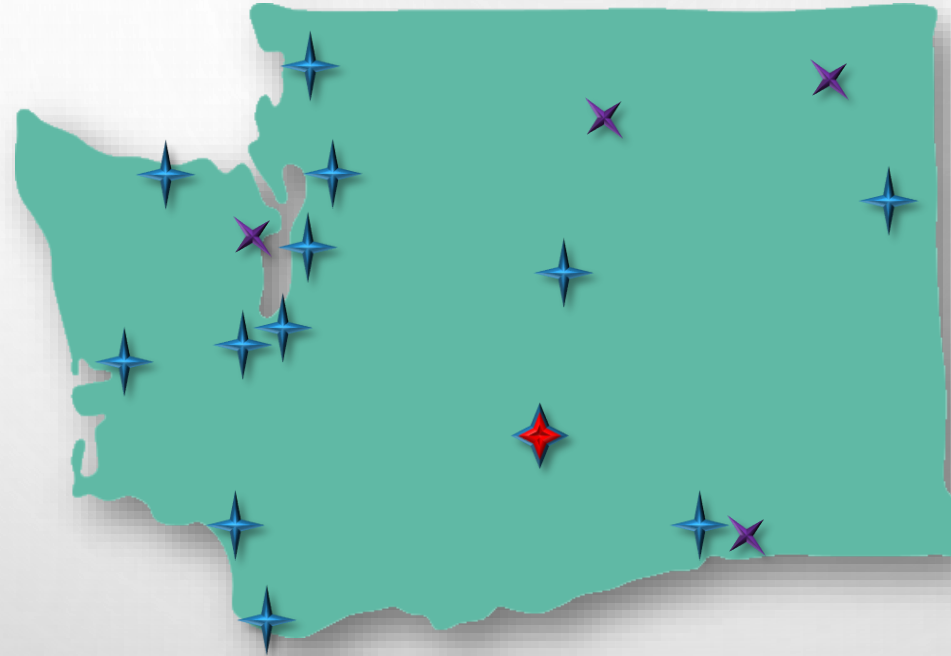


NORTHWEST JUSTICE PROJECT

Labor Trafficking

NJP



Farm Worker Unit

- WAGE CLAIMS
- DISCRIMINATION
- SEXUAL ASSAULT
- HEALTH AND SAFETY
- EMPLOYMENT RIGHTS
- UNEMPLOYMENT BENEFITS (LIMITED)
- WORKERS' COMPENSATION (H2A ONLY)
- LABOR EXPLOITATION AND TRAFFICKING



Human Trafficking

THE USE OF FORCE, FRAUD OR COERCION TO COMPEL (CONTROL) ANOTHER PERSON INTO ANY FORM OF LABOR (WORK) OR SERVICES AGAINST THEIR WILL. THIS INCLUDES COMMERCIAL SEX ACTS.

Smuggling

- Person voluntarily and with consent seeks to enter foreign country
- Crime against a country's borders
- Movement generally required



Human Trafficking

- Labor or services are induced by force, fraud, or coercion
- Crime against individuals for exploitation
- Movement not required

Labor Trafficking

the recruitment, harboring, transportation, provision, or obtaining of a person for labor or services through the use of force, fraud, or coercion for the purpose of subjection to involuntary servitude, peonage, debt bondage, or slavery.

8 C.F.R. § 214.11(a)

Where?



Who?



SIGNS FOR CONCERN



- RESTRICTING/PROHIBITING MOVEMENT
- RECRUITMENT FEES OR LARGE DEBTS OWED TO RECRUITERS/EMPLOYERS
- CONTROL AND/OR CONSTANT SURVEILLANCE
- CONFISCATION OF IDENTIFICATION DOCUMENTS
- THREATS OF ABUSE OF LEGAL PROCESS E.G. REPORTING TO LEA OR ICE/DHS



Asistencia Legal y Ayuda Social

ALAS consists of a 3-year grant funded by the Office of Crime Victims Advocacy through the Department of Commerce

- Legal assistance and support services to victims/survivors of labor trafficking
- Direct outreach and community education (awareness)
- Collaboration with service providers for referrals and best practice approach



NEED HELP?

Northwest Justice Project

Human trafficking can occur in many different industries including: agriculture, construction, domestic service (nanny, maid, cleaning), restaurants, beauty salons, prostitution, and others.

**No one can force you to work!
Or control your life!**

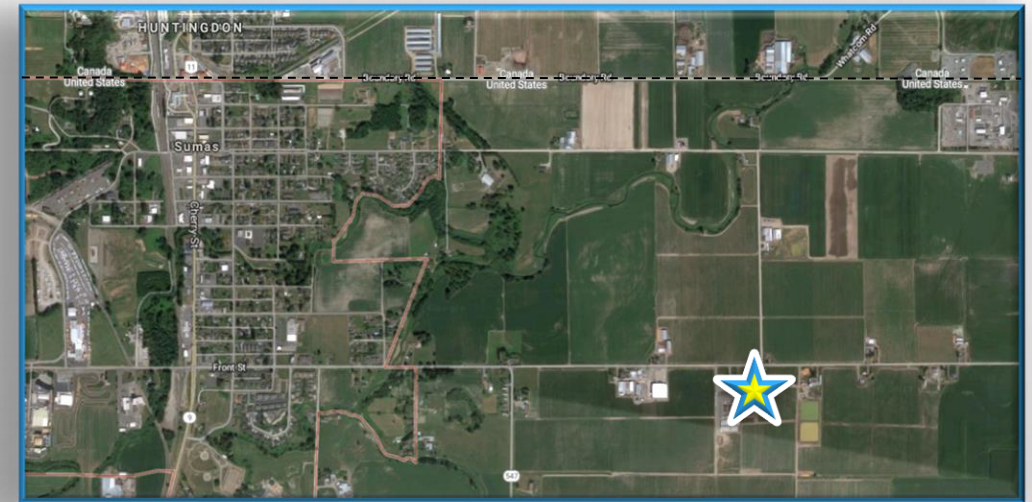
You should not:

- ◆ Be obligated to work against your will due to threat, deceit or fraud
- ◆ Be denied your rights as a worker including: minimum wage or contracted salary, breaks, food, bathroom access, water and medical care for work-related injuries
- ◆ Take away your passport or documents of identification
- ◆ Deny or restrict your movement
- ◆ Pressure or force you into prostitution
- ◆ Charge you fees related to recruitment

We can also help you find security/protection and social services, Call: **509-406-6395**

Emergency Response

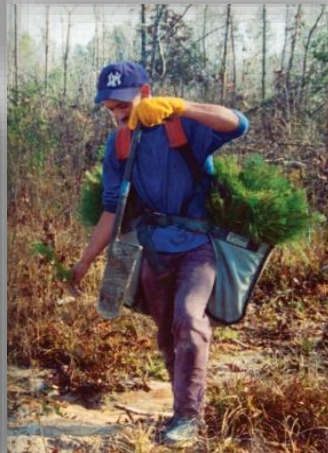
Sarbanand Farms
Sumas, Washington



- ◆ Camp is <1mile from Canadian border
- ◆ 600+ H2A workers
- ◆ 2 local workers
- ◆ Expired Visas
- ◆ 30min lunch
- ◆ Locked gates + security



H2B Forestry



H2A Sheep Herders





Q&A

ALAS 

The logo for ALAS (Alaska) features the word 'ALAS' in a bold, serif font, followed by a stylized graphic of a bird in flight.

509-406-6395

Thank you!